



Equity



WHICH STOCKS ARE MOVING RIGHT NOW?

- > See market action in full color, with customizable price alerts, dynamic graphs, ticker tapes, and news panels or through your own spreadsheet using the real-time data feed on the BLOOMBERG PROFESSIONAL™ service.
- > Use spreadsheet mode to input data into cells and perform custom calculations upon that data.



NEWS YOU CAN USE.

- > Equity professionals around the world gain competitive advantage from Bloomberg.
- > Through fast-breaking, comprehensive, targeted stories from BLOOMBERG NEWS® -our award-winning news organization-integrated with our data, analytics, and research, Bloomberg moves the equity markets and explains the market's moves.



WHERE WILL YOU FIND YOUR NEXT GREAT STOCKS?

- > Build a customized search that allows you to scan the Bloomberg Financial Markets database of more than 100,000 securities from 95 countries for the stocks that best fit your investment style.
- > Select the characteristics that you think will help pick winners from the massive database.

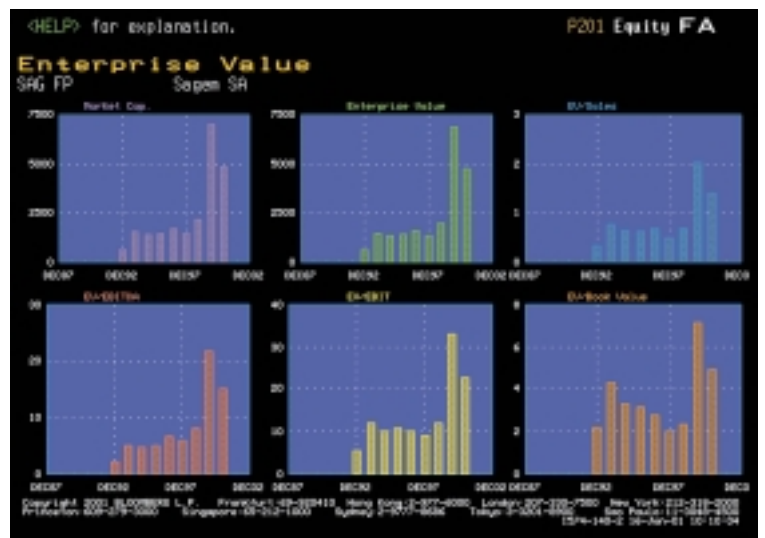


GET A QUICK AND COMPLETE PICTURE OF YOUR IDEA.

Get an instant feel for your stock at the touch of a button. Trading activity, valuation levels, peer comparison, and news—all on one screen.

GET THE FUNDAMENTALS RIGHT.

Dig into 10 years of uniquely harmonized financial statements, and identify trends in sales, cash flow, profitability levels, and capital structure.



RVP Client RVP

Use <PAGE FUD>, <PAGE BRCD> and Arrow keys for more data.

53 Secs found were = 1 / 4

Short Name	Sale Growth	ROE	IBES EST LT GROWTH RATE	Weighted Average Cost of	SUSTAIN-ABLE GROWTH R.	DM Implied Growth R.
Average (EQUITIES ONLY)	36.697	38.852	21.874	7.2593	25.633	8.8979
Portfolio Members (EQUITIES ONLY)						
WALD NV	26.72	38.73	16,140	6.54	22.26	11.39
TSBANK-C	102.55	40.14	18,500	7.52	21.40	12.63
CASOPANA TUBOS	N.A.	N.A.	23,590	6.55	0.00	13.99
LUKOIL-HOLDING	140.62	44.11	10,469	7.06	44.11	3.27
RECKITT BENCOISE	-1.21	-3.75	17,000	4.84	-3.75	8.87
EPICOS AG	13.26	26.89	35,000	7.21	26.89	19.57
SMITHS GRP PLC	10.56	42.03	11,000	6.75	24.15	4.23
EPG EURIBANK ERG	360.82	26.12	44,000	8.12	20.46	12.66
CNP ASSURANCES	15.91	15.42	16,270	6.52	11.16	5.54
PANAFON YOUTHONE	4.34	76.21	15,950	9.27	76.21	12.97
VONTOBEL HLDG-B	14.33	35.52	13,300	6.94	17.13	9.09
HOLDIG-SALOMON	5.70	39.84	15,000	5.37	32.54	9.57
LOHMAN PLC	65.28	25.96	75,000	6.79	15.85	7.80
PATLAIN PLC	N.A.	N.A.	35,000	8.87	0.00	16.09

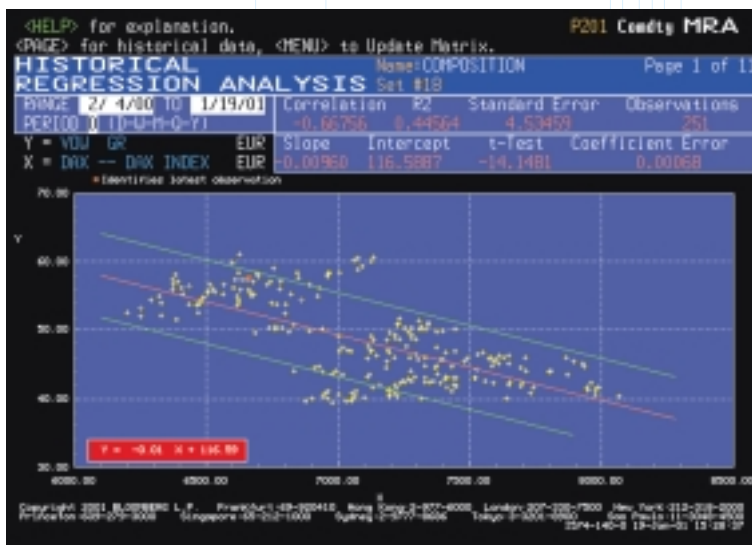
Copyright 2003 BLOOMBERG L.P. Frankfurt 49-694119 Hong Kong 852-277-8080 London 207-220-7500 New York 212-211-2000

PEER GROUP ANALYSIS.

Isolate or define your stock's competition, and compare its performance against the average for the group—measured by a choice of more than 3,000 fundamental, technical, descriptive, total return, and estimate criteria.

WHAT'S DRIVING YOUR STOCK'S PERFORMANCE?

- > Measure the impact that an array of economic and market factors could have on your stock.
- > Identify the relationships among the elements to gather insights into future market developments.



HOW WILL THE CHARACTERISTICS OF YOUR PORTFOLIO CHANGE IF YOU DO THE TRADE?

- > Compare a post trade scenario portfolio with your current one.
- > How are its characteristics, diversification, and risk measures affected by the proposed trade?
- > Will it make the right difference?

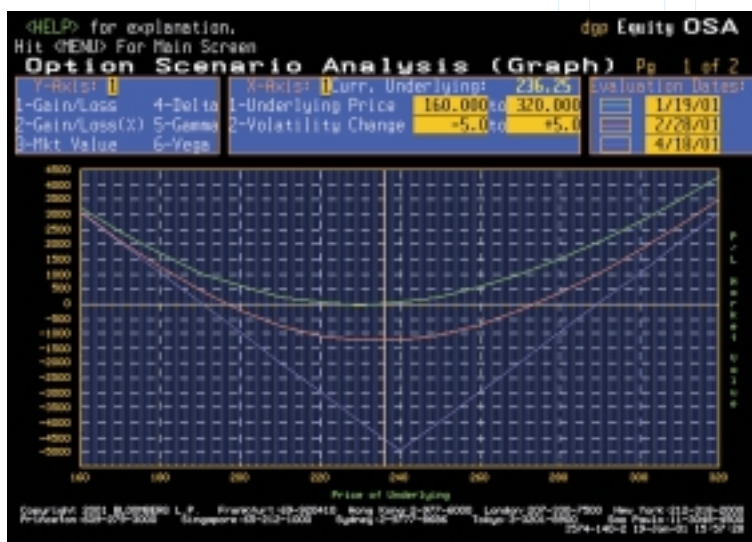
EQUITY RISK & RETURN

Portfolio 27 BLOOMBERG EUROPE 500 INDEX (BE500) (S)

Industry Sector	Num	Market Value	% of Portf.	IBES EST P/E THIS YR	IBES EST P/E NEXT YR
1 BASIC MATERIALS	21	217,232,773	2.60	15.69	14.03
2 COMMUNICATIONS	79	1,757,381,551	21.03	60.72	41.60
3 CONSUMER, CYCLICAL	57	443,896,906	5.31	25.23	20.04
4 CONSUMER, NON-CYCLICAL	95	1,450,632,966	17.36	38.96	27.16
5 DIVERSIFIED	10	31,109,827	0.37	23.92	23.31
6 ENERGY	15	686,049,231	8.21	14.68	15.06
7 FINANCIAL	122	2,128,197,764	25.46	22.31	19.24
8 INDUSTRIAL	64	950,154,522	11.61	32.31	22.02
9 TECHNOLOGY	28	732,302,710	8.76	236.32	132.15
10 UTILITIES	24	321,128,259	3.84	21.88	19.01
TOTAL/AVERAGE:	520	8,358,000M	100.00	50.57	34.90

HOW CAN DERIVATIVES HELP YOU LEVERAGE OR HEDGE YOUR POSITION?

- > Value options, exotics, warrants, and convertibles, and analyze their performance under various scenarios.
- > Which combination of securities gives you the best risk/reward profile for maximizing the returns on your idea?



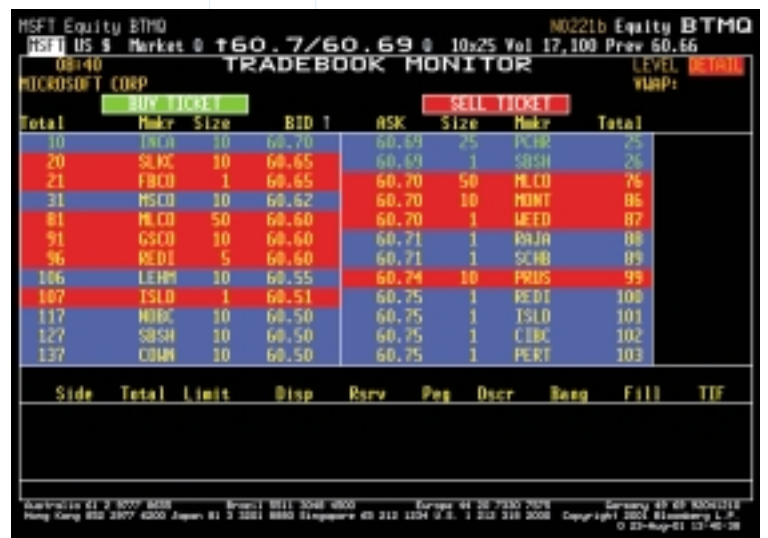
WHAT ARE RECENT TRADING PATTERNS SUGGESTING ABOUT YOUR STOCK'S NEXT MOVE?

- > Should you buy today or wait?
- > Should you sell today or wait?
- > Maximize your entry/exit decisions via a host of technical indicators.



CHOOSE WISELY; TRADE SMART.

- > BLOOMBERG TRADEBOOK® provides electronic access to global exchanges and execution capabilities in major markets worldwide.
- > We provide our clients with advanced, innovative trading tools to anonymously access multiple pools of equity liquidity around the globe quickly and easily backed by a true commitment to customer service.



BLOOMBERG'S ELECTRONIC EQUITY MARKETPLACE.

- > Select your choice of brokers, sorted by region from Bloomberg's Equity Order Routing menu.
- > Send orders via the BLOOMBERG PROFESSIONAL service, and use the trade blotter to view the status of all open, filled, or canceled trades—in real time and on the same screen.



Founded in 1981, Bloomberg L.P. is a unique entrepreneurial organization that provides information, services, and media for financial professionals around the globe. The **BLOOMBERG PROFESSIONAL™** service is the interactive financial information network that serves as Bloomberg's core business. The service seamlessly integrates data, news, analytics, multimedia reports, electronic trading, and email into a single platform. Market professionals use our all-inclusive desktop solution to make informed decisions and complete transactions, 24 hours a day, seven days a week.



FOR 24-HOUR ASSISTANCE,
PRESS <HELP> TWICE.

LIQUIDITY PRODUCTS

- > **BLOOMBERG TRADEBOOKSM** — a global electronic agency brokerage for institutional investors, offering innovative trading solutions in equity and fixed-income markets. Provides clients with the trading technology and the sophisticated algorithms to help them seek best execution.†
- > **BLOOMBERG POWERMATCHSM** — an electronic over-the-counter trading platform for power, gas, and FX forwards. Gives traders executable prices, anonymous access to liquidity, speed, and control.†
- > **BLOOMBERG® Road Shows** — an electronic securities marketing service. Enables issuers and underwriters to enhance their new issue presentations and reach investors over our secure network and the Internet.

STRAIGHT-THROUGH PROCESSING

- > **BLOOMBERG® Trade Order Management Systems** — a global risk-management, position-keeping platform, integrating straight-through processing and electronic trading.
- > **BLOOMBERG® Portfolio Order Management Systems** — a front-office order management solution, providing cash and position management, portfolio modeling, and benchmarking.
- > **Equity Order Routing** — enables buy-side clients to electronically route order flow to their brokers via the Bloomberg network.

DATA PRODUCTS

- > **BLOOMBERG® Data License** — access to the entire Bloomberg financial database for use in custom applications. Bloomberg data offers descriptive detail, pricing, corporate actions, and proprietary calculated analytic data on over 4 million security types spanning all global markets.

- > **Software Developer Kit** — use, manipulate, and integrate Bloomberg's data with proprietary applications.
- > **BLOOMBERG® Energy** — a single platform for the energy markets, providing price updates, market commentary, and news.

MULTIMEDIA SERVICES

- > **BLOOMBERG NEWS®** — comprehensive coverage of markets, economies, companies, politics, sports, news, and more. With more than 1,600 reporters and editors in 87 news bureaus, BLOOMBERG NEWS® is the main content provider for all Bloomberg media.
- > **BLOOMBERG TELEVISIONSM** — a 24-hour business channel broadcast around the globe on 10 channels in seven languages, providing viewers with a combination of anchored video reports, interviews with top financial decision makers, text updates, and breaking market news.
- > **BLOOMBERG RADIOSM** — provides listeners with business and financial news, market reports, general news updates, and personal finance strategies. BLOOMBERG® WBBR 1130 in New York is the flagship station of BLOOMBERG RADIOSM, broadcasting 24 hours a day.
- > **BLOOMBERG.COMSM** — drawing from the data power of the BLOOMBERG PROFESSIONAL service and global news power of BLOOMBERG NEWS, BLOOMBERG.COMSM provides business and financial news, as well as the latest market information.
- > **BLOOMBERG MARKETS™** — a magazine for and about professional investors and corporate executives, the places they work and the companies they invest in, with a special focus on the BLOOMBERG PROFESSIONAL service.

† Approved by Bloomberg Tradebook Europe Limited for communication for the purposes of the United Kingdom Financial Services and Markets Act 2000. The BLOOMBERG TRADEBOOK system and the BLOOMBERG POWERMATCH system are available only to professional/qualified/institutional investors and in countries and markets where the necessary legal clearances have been obtained and are not available to private customers.

Frankfurt Hong Kong London New York San Francisco São Paulo Singapore Sydney Tokyo

+49 69 92041 0

+852 2977 6000

+44 20 7330 7500

+1 212 318 2000

+1 415 912 2960

+5511 3048 4500

+65 6212 1000

+61 2 9777 8600

+813 3201 8900